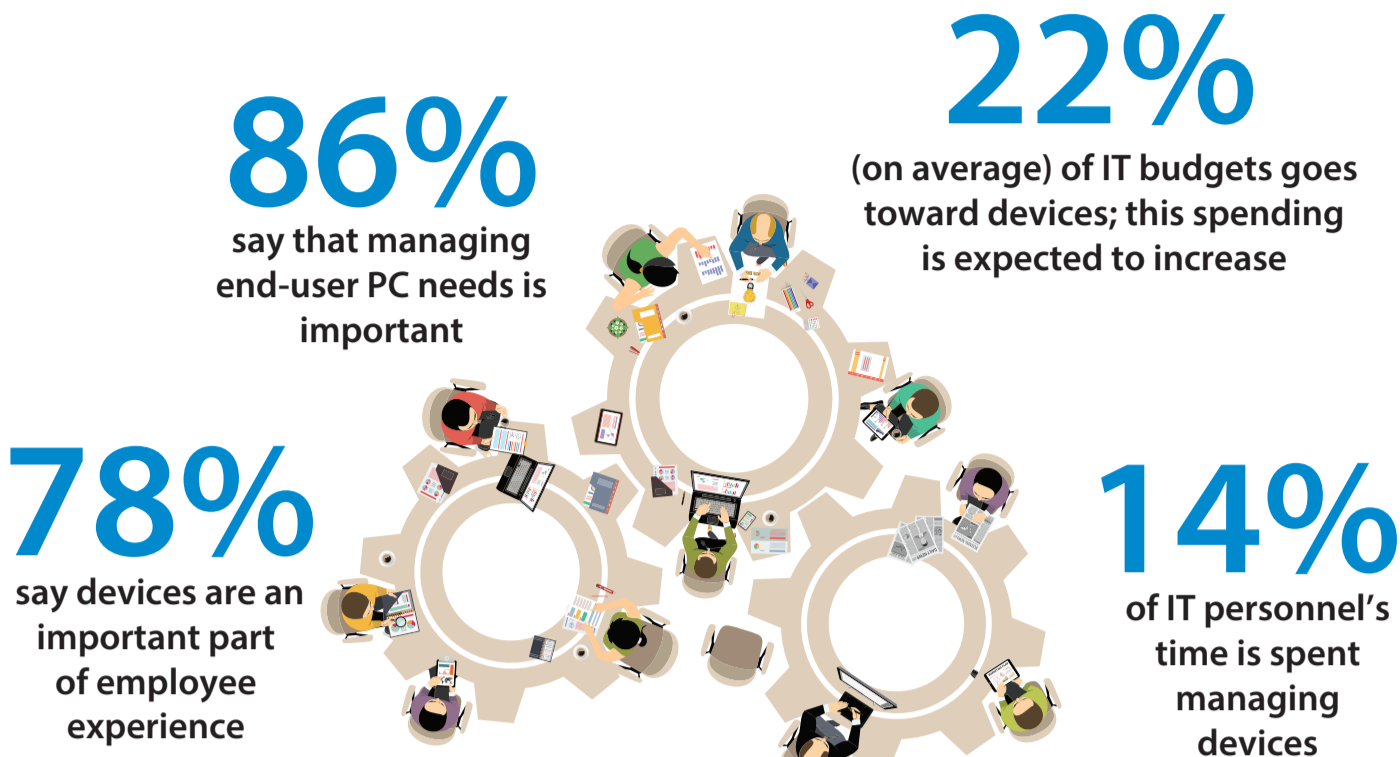


What IT leaders say about Device as a Service

An IDC Infographic, sponsored by HP Inc.

IDC study shows that Device as a Service (DaaS) could revolutionize device lifecycle management.

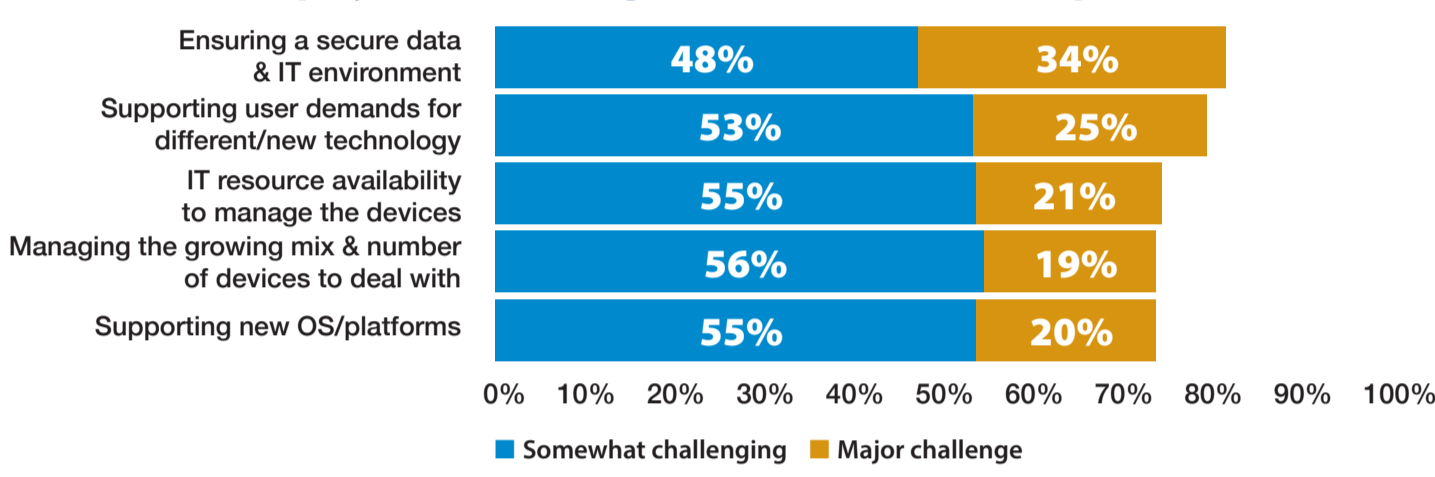
Device Deployment and Management Remain Critical to Enterprise Success



An Influx of Devices Means Managing Them All is Increasingly Challenging

Security, new technology support, and IT resource availability are the top challenges in dealing with end-user devices.

Please rate the following when it comes to your organization's employees' devices (e.g., PC, tablet, and/or smartphone)



Device Management Can Be a Significant Resource Drain for IT



Device as a Service Can Help Alleviate Device Management Issues



Device as a Service (DaaS) is a multi-year agreement in which procurement, deployment, device management, services, and lifecycle management are all handled by one vendor. The model aims to simplify IT processes and maximize resources.

DaaS Benefits – Reduced IT Workload and Lower Device Costs

Which of the following would your organization perceive as major benefits of a DaaS model?



64% believe DaaS will have a positive impact on their device management



IT decision makers estimated 25% cost savings from deploying DaaS

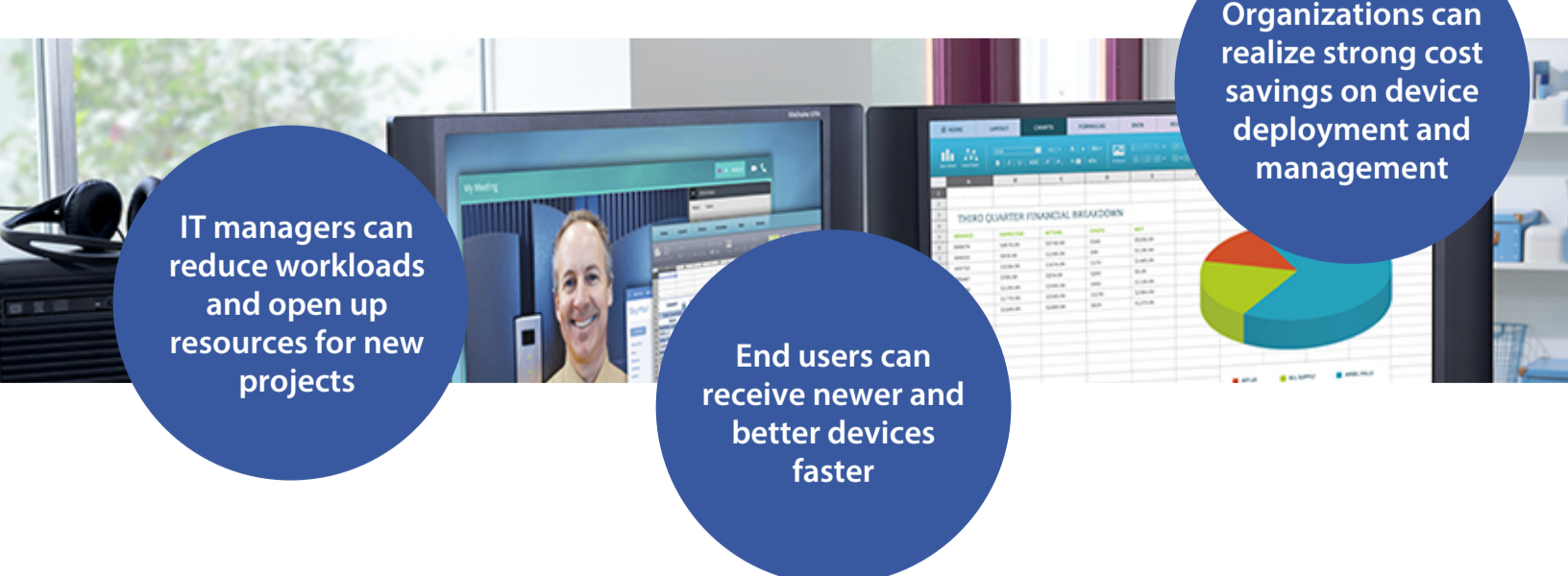


Respondents believe they can shorten their PC refresh cycle by >6 months*

*IDC's U.S. PCaaS MCS Survey, 2016

IDC Essential Guidance

DaaS is a win-win proposition for Enterprise IT.



IT managers can reduce workloads and open up resources for new projects

End users can receive newer and better devices faster

Organizations can realize strong cost savings on device deployment and management

Data Source: IDC DaaS Americas Survey, October 2016; N=456 IT/Device Decision Makers in Americas

To find out more about how HP DaaS could optimize your IT operations, visit www.hp.com/go/DaaS.

For more on this research, please read IDC's InfoBrief, [How Device as a Service Could Revolutionize Lifecycle Management](#), sponsored by HP, Inc.